

WOOLFF

89 CHARLOTTE ST
LONDON
W1T 4PU

T: +44 (0) 207 631 0551
www.woolffgallery.co.uk
info@woolffgallery.co.uk



Pam Glew Chelsea Nights 158 x 94cm (framed)
Bleaching technique & dye on customised American flag

Pam Glew, born in 1978, is a well-established, contemporary British artist, best known for her highly skilled and unique bleaching technique on fabric, vintage flags, and handmade vintage quilts.

Glew started producing artwork using textiles as a canvas around 2005. Through her unique process she creates captivating portraits and urban landscapes using dye and bleach, the visual emerging subtly from the darkness. Flags, quilts and brocade are used by the artist as she plays with our notion of icons, patriotism and the culture of heritage.

Glew has exhibited in numerous urban, traditional and site-specific exhibitions, alongside artists such as Damien Hirst, Tracy Emin and Peter Blake. She has shown in 9 major solo shows and over 100 group exhibitions in galleries, art-fairs and museums worldwide. Her work continues to be collected by art buyers globally and she is frequently commissioned by both large brands and private clients. Glew's work has featured in numerous magazines and newspaper articles, notably her artwork 'Afghan Girl', appeared on the front page of the 'Le Monde' Newspaper.

Glew is often commissioned by musicians, "Goldie has a large Jean-Michel Basquiat and Bill Wyman has a union jack I painted using Terry O'Neill's portrait of Jean Shrimpton and Terence Stamp". Glew has produced commissions for Armani, Ralph Lauren, MTV, Pepe Jeans, Red Bull, Wagamama, WB Games, and Microsoft.

The artist has been planning this exhibition for 3 years, and we are absolutely delighted to present Pam Glew's 2016 solo exhibition 'Wanderlust Hotel', at Woolff Gallery, London.
NICK WOOLFF

Pam Glew

“My own fascination with hotels was sparked by growing up in Bude, Cornwall, a West Country tourist resort which houses sleepy guest houses and hotels on the seafront, an enchanting ghost town during winter turns into a frenetic tourist resort in the summer. Brighton is now my home, legendary for its dirty weekends, affairs and general debauchery.

Inspired by the ‘goings-on’ in hotels I have resided in, and also by legendary hotels such as Chelsea Hotel and Hotel Marmont, ‘Wanderlust Hotel’ is a fictional guest house frequented by illicit overnight guests, and dark secrets. The majority of the subjects come from self-staged photo shoots; populated by the weekend girlfriend, the bride, the maid, the barman, the sleeping porter, the receptionist and the VIP guest, all swapping roles and sweeping in and out of the pictures frames.

The models in the work occupy more than one role, as a metaphor for how fate and luck play a part in our lives. In ‘Sisters’ I explored a meeting of two estranged identical twins; a maid and a VIP, an imagined rift is between them as if they have not spoken in years. Similarly, the model who plays the call girl is also the bride holding a revolver. Acting and the idea of ‘play’ is further explored in the miniature hotel. The 3D hotel model is bereft of people as if the residents are now only present in the paintings.

Love, relationships and longing are explored in this series, there is a stillness and sense of ‘waiting’ in the portraits which one often feels in hotels. Using quilts to insinuate sleep and slumber, the jigsaw like patterns are further representations of relationships and togetherness.

I use fabric; dyeing, washing and sewing as a metaphor for ‘women’s work’. Dyeing the cloth black, I then use household bleach to paint the image which reveals the original colour of the fabric. Bleaching, washing and drying around 10 times for each painting, the final piece is then thoroughly cleaned, ironed and often carefully darned by hand to repair the material. As a result, the fabrics are rich in both history and texture. I aim to celebrate the overlooked women in the history of art who have been long forgotten due to an element of ‘craft’ in their work”.

PAM GLEW



Pam Glew Drawing: French Letter 101 x 74cm (framed)
Charcoal, chalk and conte, and giclee on 330gsm 100% cotton paper



Pam Glew Barman 128 x 90cm (framed)
Bleaching technique & dye on star section of American flag



Pam Glew
CASINO
97 x 162cm (framed)
Bleaching technique & dye on vintage flag
Hand finished Giclee print also available



Opposite page:

Pam Glew

Love Hotel

74.5 x 98.5cm (framed)

Bleaching technique & dye on handmade Japanese flag

Pam Glew
Honeymoon
87 x 123cm (framed)
Bleaching technique & dye on vintage quilt



Pam Glew Motel 69 x 101cm (framed)
Bleaching technique & dye on vintage American flag



Pam Glew Brighton Morning 127.5 x 94cm (framed)
Bleaching technique & dye on vintage Union flag



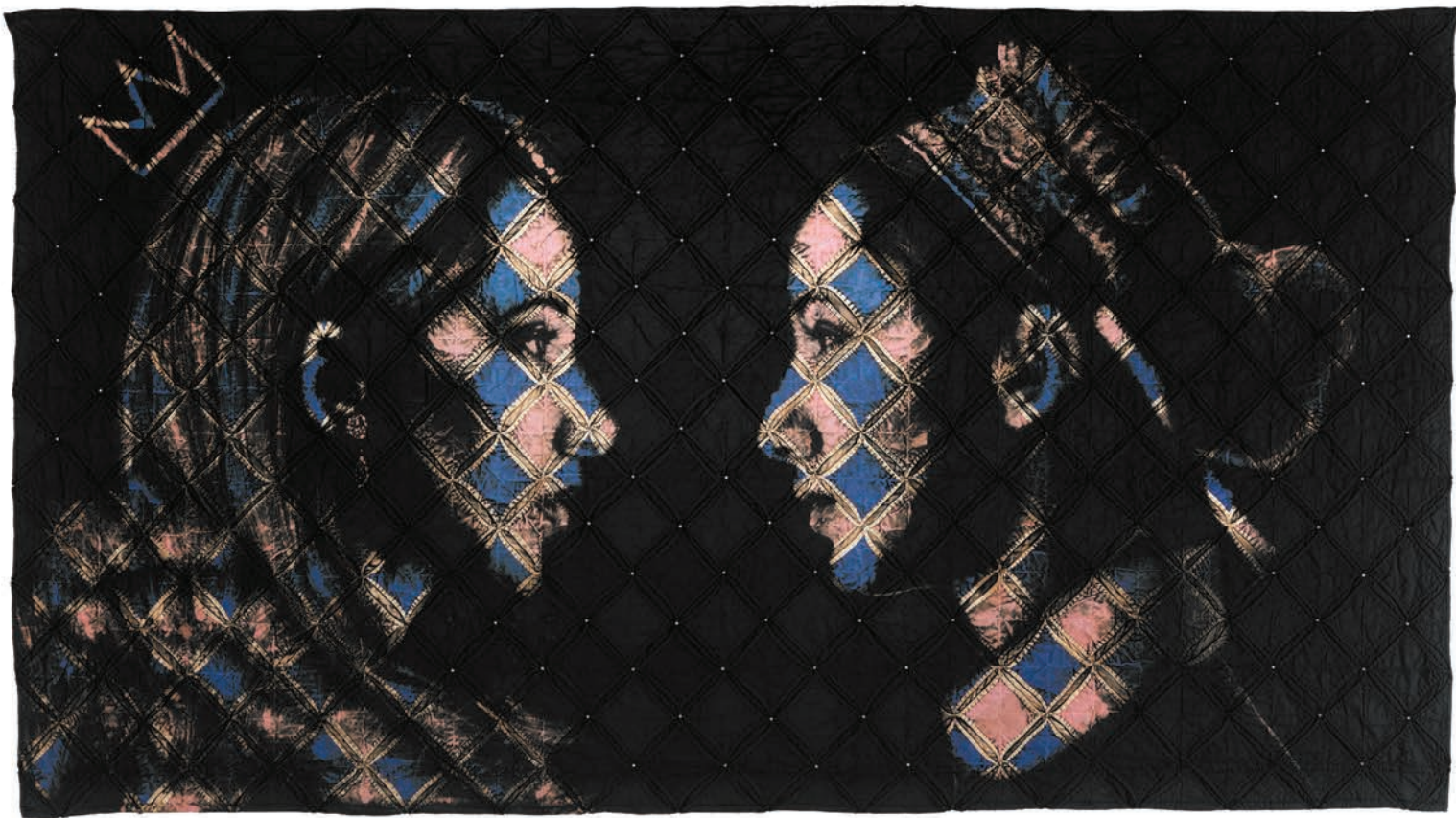


Pam Grew

The Maid

118 x 100.5cm (framed)

Bleaching technique, dye & ink on vintage quilt



Pam Glew

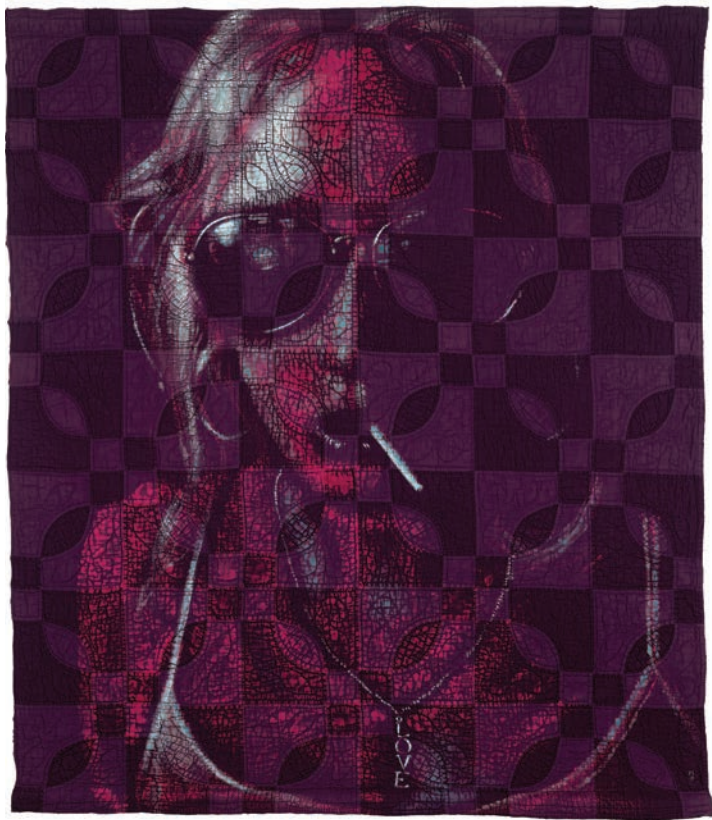
Sisters

104 x 181cm (framed without glass)

Bleaching technique & dye, with

Swarovski crystals on vintage quilt

Gold leaf and giclee print also available



Pam Glew

LOVE

119 x 104cm (framed)

Bleaching technique, dye & ink on vintage quilt



Pam Glew

Cocktail

116.5 x 103.5cm (framed)

Bleaching technique, dye & ink on vintage quilt



Pam Glew
New York Standard
99 x 163 (framed)
Bleaching technique & dye on American flag



Pam Glew The Lovers 99 x 157cm (framed)
Bleaching technique & dye on vintage quilt



Pam Glew
Suitcase
90 x 170cm (framed)
Bleaching technique & dye on vintage quilt

Pam Glew H.O.T.E.L. 83 x 146cm (framed)
Bleaching technique & dye on American flag





Pam Glew The Girlfriend 114.5 x 83.5cm (framed)
Bleaching technique & dye on handmade quilt from American flag



Pam Glew Telephone 125 x 104.5cm (framed)
Bleaching technique & dye on vintage quilt



Pam Glew

Going Up

157 x 118cm (framed without glass)

Bleaching technique & dye on vintage quilt



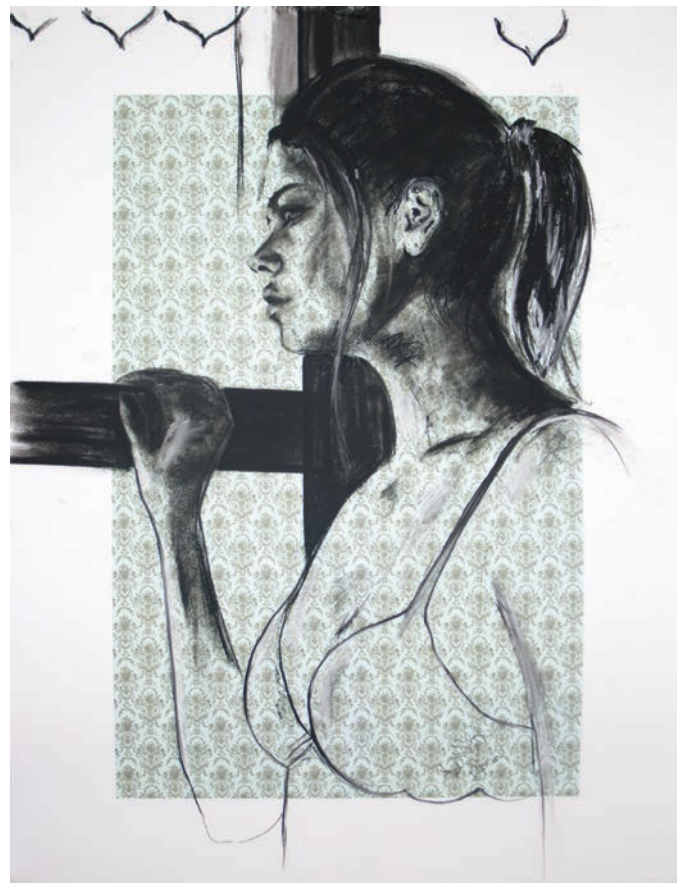
Pam Glew Bellboy Sleeping 93.5 x 125cm (framed) Bleaching technique & dye on star section of American flag



Pam Glew
Sleepwalking
108 x 108cm (framed without glass)
Bleaching technique & dye on star
section of American flag



Pam Glew Drawing: Study for 'Barman'
77 x 97.5cm (framed)
Charcoal, chalk and conte, and giclee on 330gsm 100% cotton paper



Pam Glew Drawing: Study for 'Brighton morning'
77 x 97.5cm (framed)
Charcoal, chalk and conte, and giclee on 330gsm 100% cotton paper



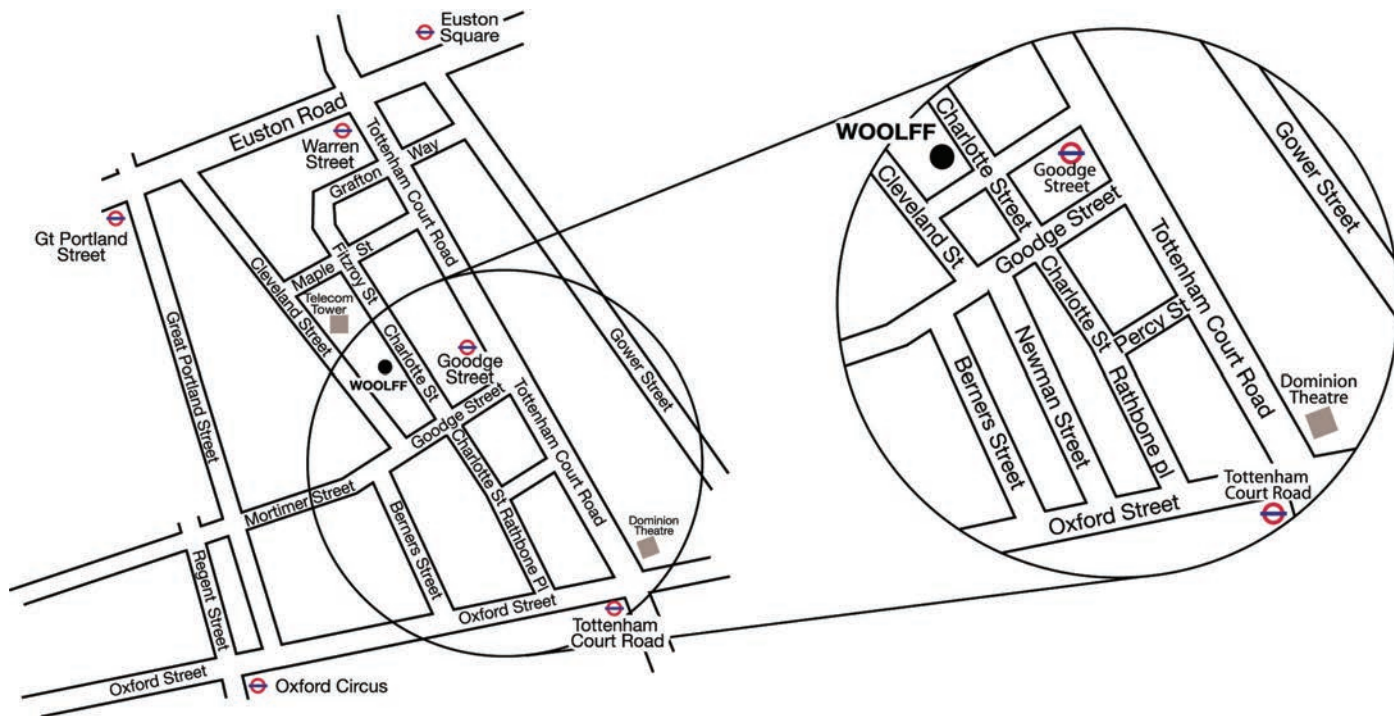
Pam Glew Wanderlust Flag 140 x 245cm (displayed unframed)
22 carat Gold leaf & dye on vintage American flag



Pam Glew
The Wanderlust Hotel 3D model (1:12)
86h x 73.5w x 38dcm
3D Model / Altered dolls house

WOOLFF

WOOLFF



WOOLFF gallery 89 Charlotte St London W1T 4PU T +44 (0) 207 631 0551 www.woolffgallery.co.uk info@woolffgallery.co.uk